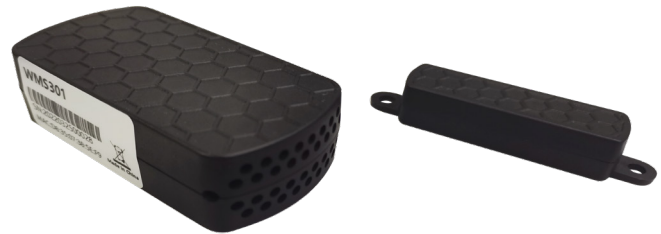




# WMS301

## BLE door sensor with temperature and humidity monitoring function

The WMS301 is used to detect door open and close status and to measure temperature and humidity levels. The product is easy to install and features IP66 waterproof housing, making it ideal for cold chain logistics, trailer and container tracking applications when working with Queclink BLE trackers.



### HIGHLIGHTS

- Easy and Low Cost Installation
- IP66 Waterproof
- Long Standby Time
- Real-Time Door Open and Close Status
- Temperature and Humidity Monitoring
- Compact Size
- LED Indicator

Dimensions	WMS301:75mm*38mm*19mm Magnet:70mm*14mm*12mm
Weight	WMS301: 48g Magnet: 18g
Operating Voltage	3V
Operating Temperature	-40°C~+70°C
BLE	Support BLE 5.1 protocol
Transmission Distance	Maximum 150m (open area)
IP Rating	IP66
Temperature measurement	Range: -40°C~70°C Accuracy: ±0.2°C (5°C~60°C) ±1.4°C (<5C or >60C) Resolution: 0.01°C
Humidity measurement	Range: 0%RH~100%RH Accuracy: ±2 %RH (20%RH~80%RH) ±3.5%RH (<20 RH or>80%RH) Resolution: 0.01% RH

T/H Sample Period	10 seconds
Door Detection Distance	<3cm
Door Status	Interrupt trigger
Static Current	Static: 4.5uA Peak: 10mA Average: 33uA
Installation	3M sticker
Battery Life	Lithium iron battery (1200mAh), over 3 years lifetime